



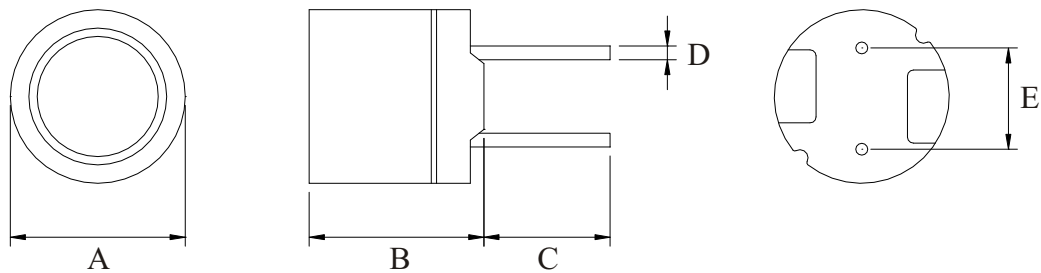
Features

- Magnetically shielded construction
- Ideal for use as an inductor for high current power supplies in all types of electronic instruments.

Applications

- OA equipment choke
- High current power supplies
- Notebook, Display monitor
- Lighting and Car electronics

► Dimensions & Configurations (Unit:mm)



Type	A(max)	B(max)	C ± 1.0	D ± 0.1	E ± 0.3
MC2W0606C	6.5	6.5	4.0	0.5	4
MC2W0807C	8.3	7.5	5.0	0.7	5
MC2W1008C	10.5	8.5	3.5	0.7	5
MC2W1010C	10.5	10.5	3.5	0.7	5

Note: Design as Customer's Requested Specifications.

► Electrical Characteristics For MC2W0606C Series

Part Number	Inductance [μ H]	DCR(max) [Ω]	IDC [A]	Test Freq
MC2W0606C - 220M	22	0.13	0.96	2.52MHz
MC2W0606C - 270M	27	0.18	0.87	2.52MHz
MC2W0606C - 330M	33	0.21	0.78	2.52MHz
MC2W0606C - 390M	39	0.26	0.72	2.52MHz
MC2W0606C - 470M	47	0.29	0.66	2.52MHz
MC2W0606C - 560M	56	0.33	0.60	2.52MHz
MC2W0606C - 680M	68	0.36	0.55	2.52MHz
MC2W0606C - 820M	82	0.39	0.50	2.52MHz
MC2W0606C - 101M	100	0.54	0.45	1KHz
MC2W0606C - 121M	120	0.62	0.41	1KHz
MC2W0606C - 151M	150	0.72	0.37	1KHz
MC2W0606C - 181M	180	0.88	0.34	1KHz
MC2W0606C - 221M	220	0.99	0.30	1KHz
MC2W0606C - 271M	270	1.52	0.27	1KHz
MC2W0606C - 331M	330	1.69	0.25	1KHz
MC2W0606C - 391M	390	1.85	0.23	1KHz
MC2W0606C - 471M	470	2.85	0.21	1KHz
MC2W0606C - 561M	560	3.21	0.19	1KHz
MC2W0606C - 681M	680	3.6	0.17	1KHz
MC2W0606C - 821M	820	4.87	0.16	1KHz
MC2W0606C - 102M	1000	5.56	0.14	1KHz

► Electrical Characteristics For MC2W0807C Series

Part Number	Inductance [μ H]	DCR(max) [Ω]	IDC [A]	Test Freq
MC2W0807C - 220M	22	0.08	1.60	2.52MHz
MC2W0807C - 330M	33	0.14	1.30	2.52MHz
MC2W0807C - 470M	47	0.17	1.10	2.52MHz
MC2W0807C - 560M	56	0.19	0.99	2.52MHz
MC2W0807C - 680M	68	0.21	0.89	2.52MHz
MC2W0807C - 101M	100	0.32	0.74	1KHz
MC2W0807C - 151M	150	0.51	0.60	1KHz
MC2W0807C - 221M	220	0.76	0.50	1KHz
MC2W0807C - 331M	330	0.97	0.41	1KHz
MC2W0807C - 471M	460	1.44	0.34	1KHz
MC2W0807C - 561M	560	1.61	0.31	1KHz
MC2W0807C - 681M	680	2.07	0.28	1KHz
MC2W0807C - 102L	1000	2.72	0.23	1KHz
MC2W0807C - 152L	1500	4.50	0.19	1KHz
MC2W0807C - 222L	2200	7.56	0.16	1KHz
MC2W0807C - 332L	3300	9.74	0.13	1KHz
MC2W0807C - 392L	3900	12.9	0.12	1KHz
MC2W0807C - 472L	4700	14.7	0.11	1KHz
MC2W0807C - 562L	5600	20.4	0.099	1KHz
MC2W0807C - 682L	6800	23.0	0.089	1KHz
MC2W0807C - 822L	8200	30.6	0.081	1KHz
MC2W0807C - 103L	10000	35.0	0.074	1KHz

► Electrical Characteristics For MC2W1008C Series

Part Number	Inductance [μ H]	DCR(max) [Ω]	IDC [A]	Test Freq
MC2W1008C - 100M	10	0.05	2.80	1KHz
MC2W1008C - 120M	12	0.06	2.50	1KHz
MC2W1008C - 150M	15	0.07	2.30	1KHz
MC2W1008C - 180M	18	0.08	2.10	1KHz
MC2W1008C - 220M	22	0.09	2.00	1KHz
MC2W1008C - 270M	27	0.1	1.76	1KHz
MC2W1008C - 330M	33	0.11	1.60	1KHz
MC2W1008C - 390M	39	0.12	1.38	1KHz
MC2W1008C - 470M	47	0.14	1.28	1KHz
MC2W1008C - 560L	56	0.15	1.20	1KHz
MC2W1008C - 680L	68	0.16	1.00	1KHz
MC2W1008C - 820L	82	0.18	0.96	1KHz
MC2W1008C - 101L	100	0.2	0.92	1KHz
MC2W1008C - 121L	120	0.24	0.80	1KHz
MC2W1008C - 151L	150	0.35	0.73	1KHz
MC2W1008C - 181L	180	0.4	0.64	1KHz
MC2W1008C - 221L	220	0.54	0.61	1KHz
MC2W1008C - 271L	270	0.76	0.56	1KHz
MC2W1008C - 331L	330	0.86	0.50	1KHz
MC2W1008C - 391L	390	0.93	0.44	1KHz
MC2W1008C - 471L	470	1.23	0.41	1KHz
MC2W1008C - 561L	560	1.34	0.38	1KHz
MC2W1008C - 681L	680	1.53	0.34	1KHz
MC2W1008C - 821L	820	2.1	0.32	1KHz
MC2W1008C - 102L	1000	2.3	0.28	1KHz

▶ Electrical Characteristics For MC2W1010C Series

Part Number	Inductance [μ H]	DCR(max) [Ω]	IDC [A]	Test Freq
MC2W1010C - 100M	10	0.023	3.51	1KHz
MC2W1010C - 120M	12	0.024	3.24	1KHz
MC2W1010C - 150M	15	0.036	2.88	1KHz
MC2W1010C - 180M	18	0.039	2.61	1KHz
MC2W1010C - 220M	22	0.042	2.34	1KHz
MC2W1010C - 270M	27	0.045	2.16	1KHz
MC2W1010C - 330L	33	0.057	1.89	1KHz
MC2W1010C - 390L	39	0.076	1.80	1KHz
MC2W1010C - 470L	47	0.10	1.62	1KHz
MC2W1010C - 560L	56	0.11	1.44	1KHz
MC2W1010C - 680L	68	0.15	1.35	1KHz
MC2W1010C - 820L	82	0.16	1.26	1KHz
MC2W1010C - 101L	100	0.19	1.08	1KHz
MC2W1010C - 121L	120	0.21	0.99	1KHz
MC2W1010C - 151L	150	0.23	0.90	1KHz
MC2W1010C - 181L	180	0.26	0.82	1KHz
MC2W1010C - 221L	220	0.29	0.74	1KHz
MC2W1010C - 271L	270	0.36	0.67	1KHz
MC2W1010C - 331L	330	0.51	0.61	1KHz
MC2W1010C - 391L	390	0.69	0.55	1KHz
MC2W1010C - 471L	470	0.98	0.51	1KHz
MC2W1010C - 561L	560	1.1	0.46	1KHz
MC2W1010C - 681L	680	1.2	0.42	1KHz
MC2W1010C - 821L	820	1.3	0.38	1KHz
MC2W1010C - 102L	1000	1.5	0.35	1KHz