

# SMD Semi-Shielded Power Inductor - SNR6020 Series **Meisongbei**



## Features

- Magnetic-resin Shielded reduces noise
- Inductance Range: 1uH - 470uH
- Rated current up to 6A
- Small and very Thin inductor

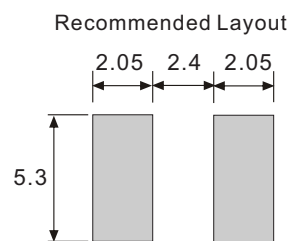
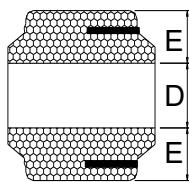
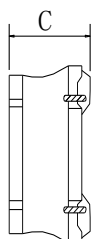
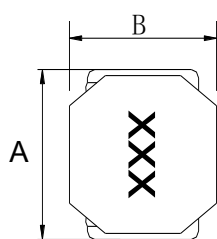
## Application

- LED Lighting,
- Automotive systems,
- Notebooks, desktop computers, servers, graphic cards.

## General Specifications

- Storage temp range: -40°C to +85°C
- Operating temp range: -40°C to +125°C
- Resistance to Soldering Heat +260°C for 5-10 Sec.

## ► Dimensions & Configurations (Unit:mm)



Type	A	B	C	D	E
SNR6020	6.0±0.2	6.0±0.2	2.0Max	2.7±0.2	1.65±0.2

## ► Electrical Characteristics For SNR6020 Series

Part Number	Inductance [uH]	DCR(max) [mΩ]	Isat [A] (Max.)
SNR6020-1R0N	1.0±30%	28	4.27
SNR6020-1R5N	1.5±30%	35	4.20
SNR6020-2R2N	2.2±30%	45	3.20
SNR6020-3R3M	3.3±20%	46	3.15
SNR6020-4R7M	4.7±20%	90	2.80
SNR6020-6R8M	6.8±20%	140	2.20
SNR6020-100M	10±20%	175	1.85
SNR6020-120M	12±20%	190	1.70
SNR6020-150M	15±20%	200	1.35
SNR6020-220M	22±20%	280	1.29
SNR6020-330M	33±20%	400	1.00
SNR6020-470M	47±20%	650	0.90
SNR6020-680M	68±20%	990	0.65
SNR6020-101M	100±20%	1430	0.50