



Features

- Soldered self-leaded construction
- High rated current and low DCR
- Core Material: Ferrite
- RoHS, Halogen Free and REACH compliance

Package

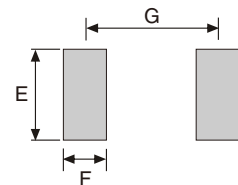
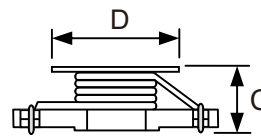
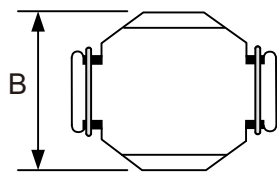
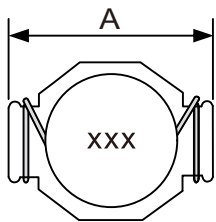
- MSG3316HC - 1000 PCS/Reel

General Specifications

- Storage temp range: -40°C to +80°C
- Operating temp range: -40°C to +125°C
- Moisture Sensitivity Level(MSL): 1



► Dimensions & Configurations (Unit:mm)



Type	A (max)	B (max)	C (max)	D (Ref)	E (Ref)	F (Ref)	G (Ref)
MSG3316HC	13.2	9.9	6.4	8.4	4.06	1.52	10.16

► Electrical Characteristics For MSG3316HC Series

Part Number	Inductance [μH]	DCR(max) [Ω]	Isat(max) [A]	Irms(max) [A]
MSG3316HC-R33M	0.33 ±20%	0.002	20.0	16.0
MSG3316HC-R68M	0.68 ±20%	0.005	13.0	12.0
MSG3316HC-1R0M	1.0 ±20%	0.006	11.0	10.0
MSG3316HC-1R5M	1.5 ±20%	0.008	9.0	9.0
MSG3316HC-2R2M	2.2 ±20%	0.011	7.8	7.4
MSG3316HC-2R7M	2.7 ±20%	0.012	7.0	6.6
MSG3316HC-3R3M	3.3 ±20%	0.014	6.4	5.9
MSG3316HC-4R7M	4.7 ±20%	0.018	5.4	4.8

- Inductance tested at 100kHz, 0.25Vrms, 0.0Adc
- Heat Rating Current (Irms): Current that cause the temperature 40°C rise from 25°C
- Saturation Current (Isat): DC current at which the inductance drops 30% from its value without current