



### Features

- Shielded Construction
- LCP Plastic Base
- RoHS, Halogen Free and REACH compliance

### General Specifications

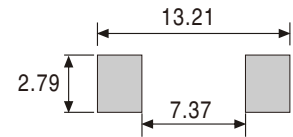
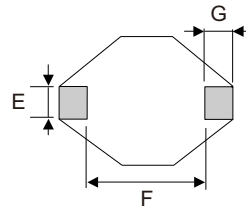
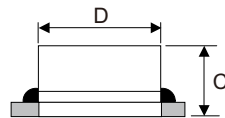
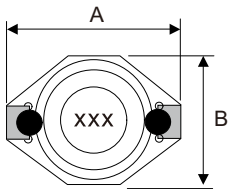
- Storage temp range: -40°C to +125°C
- Operating temp range: -40°C to +125°C
- Moisture Sensitivity Level(MSL): 1

### Package

- MSS3316 - 1000 PCS/Reel



## ► Shape and Dimensions (Unit:mm) Recommended Layout



Type	A (max)	B (max)	C (max)	D (±0.3)	E (±0.2)	F (±0.3)	G (±0.2)
MSS3316	12.95	9.40	5.21	8.38	2.54	7.62	2.54

## ► Electrical Characteristics For MSS3316 Series

Part Number	Inductance [μH]	DCR(max) [Ω]	SRF(Typ) [MHz]	Isat (max) [A]	Irms (max) [A]
MSS3316-1R0M	1.0 ±20%	0.021	140	5.6	5.0
MSS3316-1R5M	1.5 ±20%	0.022	120	5.2	4.5
MSS3316-2R2M	2.2 ±20%	0.032	80	5.0	3.8
MSS3316-3R3M	3.3 ±20%	0.039	70	3.9	3.3
MSS3316-4R7M	4.7 ±20%	0.054	40	3.2	2.7
MSS3316-6R8M	6.8 ±20%	0.075	38	2.8	2.2
MSS3316-100M	10 ±20%	0.101	35	2.4	2.0
MSS3316-150M	15 ±20%	0.150	25	2.0	1.5
MSS3316-220M	22 ±20%	0.207	19	1.6	1.3
MSS3316-330M	33 ±20%	0.334	15	1.4	1.1
MSS3316-470M	47 ±20%	0.472	13	1.0	0.8
MSS3316-680M	68 ±20%	0.660	10	0.9	0.7
MSS3316-101M	100 ±20%	1.110	7	0.8	0.6
MSS3316-151M	150 ±20%	1.550	6	0.6	0.5
MSS3316-221M	220 ±20%	2.000	5	0.5	0.37
MSS3316-102M	1000 ±20%	8.300	2	0.32	0.17

- Inductance tested at 100kHz
- Heat Rating Current (I<sub>rms</sub>): Current that cause the temperature 40°C rise from 25°C
- Saturation Current (I<sub>sat</sub>): DC current at which the inductance drops 10% from its value without current