



### Features

- High current; very low DCR
- Soft saturation makes them
- AEC-200 Grade 1 (-40°C to +125°C)

### Package

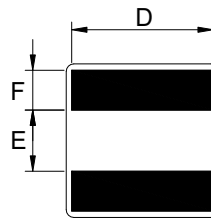
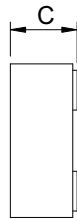
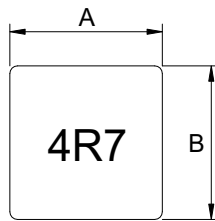
- MXAL4020 - 3000 PCS/Reel
- MXAL4030 - 2000 PCS/Reel

### General Specifications

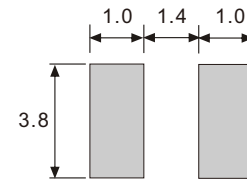
- Inductance tested at 100kHz, 0.1Vrms
- Isat: Inductance 30% drop max at DC current.
- Irms: Current that cause 40°C rise from 25°C



## ► Dimensions & Configurations (Unit:mm)



### Recommended Layout



Type	A (±0.3)	B (±0.3)	C (Max.)	D (±0.3)	E (±0.3)	F (±0.3)
MXAL4020	4.1	4.1	2.1	3.4	1.7	0.88
MXAL4030	4.1	4.1	3.1	3.4	1.7	0.88

## ► Electrical Characteristics For MXAL4020/4030 Series

Part Number	Inductance (μH) ±20%	DCR (mΩ) Max.	Isat (A) Max.	Irms (A) Typ.
MXAL4020-R10M	0.1	2.42	33	18
MXAL4020-R22M	0.22	4.6	18.8	16.8
MXAL4020-R36M	0.36	6.3	15	14.5
MXAL4020-R40M	0.4	7.73	13.5	14
MXAL4020-R47M	0.47	8.58	13	12.5
MXAL4020-R56M	0.56	9.3	12.6	12
MXAL4020-R60M	0.6	9.52	12.3	11.7
MXAL4020-R72M	0.72	11.6	10.6	10.5
MXAL4020-1R0M	1	14.6	8.8	9.6
MXAL4020-1R2M	1.2	17.9	7.8	9
MXAL4020-1R5M	1.5	23.5	7.4	7.6
MXAL4020-1R8M	1.8	28	7	7
MXAL4020-2R2M	2.2	38.7	6	5.6
MXAL4030-R47M	0.47	7.26	15	14
MXAL4030-R90M	0.9	10.1	9	11.2
MXAL4030-1R0M	1	10.1	9.2	11
MXAL4030-1R2M	1.2	11.5	8.7	9.8
MXAL4030-1R5M	1.5	13.2	7	9
MXAL4030-2R2M	2.2	22.6	6.1	7.8
MXAL4030-3R3M	3.3	28.6	5.3	6.6