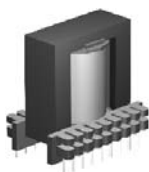


ERL28 5 Outputs: 3.3 / 5 / 12 / 18 / 30V Switching Transformer

Meisongbei



Features

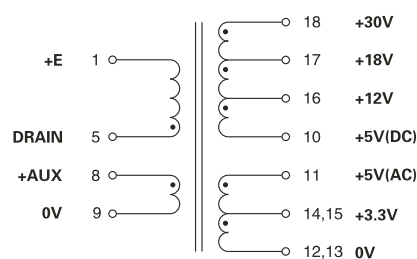
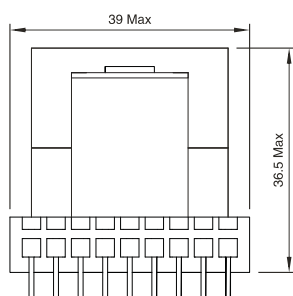
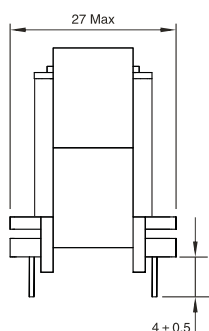
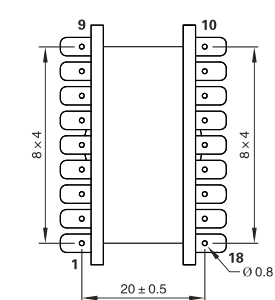
- Primary / Secondary Insulation $\geq 4000V$
- Primary / Auxiliary Insulation $\geq 1500V$
- Creepage distances Primary / secondary $\geq 6mm$

Applications

- AC-DC converters
- DC-DC converters
- Switch Power supplies
- SMPS: Flyback
- SMPS: Half Bridge and Full Bridge

Physical Characteristics (Unit:mm)

Schematic



PCB Hole Diameter=1.1mm

Electrical Characteristics

Part Number	Output Power max	Windings					Inductance ($\pm 10\%$)	Ambient Temperature	Frequency
			Pins	Turns	Voltage	Current (max)			
ERL2801	60VA	Pri	5-1	45	185 - 265 Vrms	3 Apeak	500 μ H	<50°C	60 or 132KHz
		Aux	8-9	7	15 Vdc	0.5 Adc			
		S1	14+15/12+13	2	3.3 Vdc	7 Adc			
		S2	11/12+13	3	5 Vdc	sum S1+S2			
		S3	16-10	4	12 Vdc	2 Adc			
		S4	17-10	7	18 Vdc	2 Adc			
		S5	18-10	13	30 Vdc	0.5 Adc			