



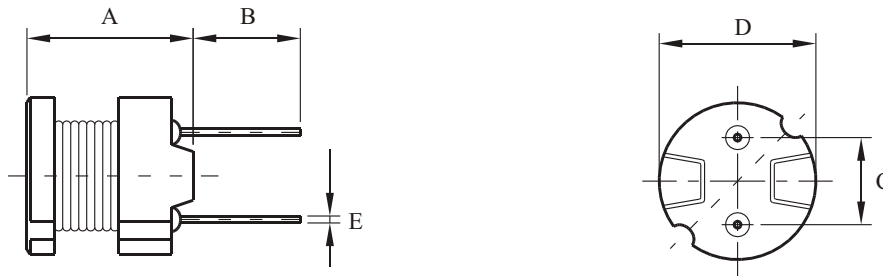
Features

- Polyolefin Shrink Tubing
- Wire-wound construction
- High Inductance and Lower RDC
- Excellent Environmental characteristics high reliability

Applications

- Power Supplies
- SCR and TRIAC Controls
- RFI Suppression
- Filters
- Switching Regulators

► Dimensions & Configurations (Unit:mm)



Type	A (max)	B ± 1.0	C ± 0.3	D (max)	E
MC2W0605	5.0	4.0	4.0	6.5	0.5
MC2W0606	6.5	4.0	4.0	6.5	0.5
MC2W0805	5.5	5.0	5.0	8.3	0.7
MC2W0807	7.5	5.0	5.0	8.3	0.7
MC2W0809	9.5	5.0	5.0	8.3	0.7
MC2W1014	10.0	3.5	5.0	10.5	0.7

Note: Design as Customer's Requested Specifications.

▶ Electrical Characteristics For MC2W0605 Series

Part Number	Inductance [μH]	DCR(max) [Ω]	IDC [A]
MC2W0605 - 220M	22	0.18	0.90
MC2W0605 - 270M	27	0.21	0.81
MC2W0605 - 330M	33	0.27	0.74
MC2W0605 - 390M	39	0.29	0.68
MC2W0605 - 470M	47	0.34	0.62
MC2W0605 - 560M	56	0.42	0.57
MC2W0605 - 680M	68	0.48	0.51
MC2W0605 - 820M	82	0.55	0.47
MC2W0605 - 101K	100	0.68	0.42
MC2W0605 - 121K	120	0.77	0.39
MC2W0605 - 151K	150	0.95	0.35
MC2W0605 - 181K	180	1.15	0.32
MC2W0605 - 221K	220	1.30	0.29
MC2W0605 - 271K	270	1.55	0.26
MC2W0605 - 331K	330	2.18	0.23
MC2W0605 - 391K	390	2.47	0.21
MC2W0605 - 471K	470	2.92	0.20
MC2W0605 - 561K	560	3.97	0.18
MC2W0605 - 681K	680	4.57	0.16
MC2W0605 - 821K	820	5.28	0.15
MC2W0605 - 102K	1000	7.06	0.13

▶ Electrical Characteristics For MC2W0606 Series

Part Number	Inductance [μH]	DCR(max) [Ω]	IDC [A]
MC2W0606 - 220M	22	0.11	1.27
MC2W0606 - 270M	27	0.14	1.14
MC2W0606 - 330M	33	0.17	1.03
MC2W0606 - 390M	39	0.19	0.95
MC2W0606 - 470M	47	0.23	0.87
MC2W0606 - 560M	56	0.26	0.80
MC2W0606 - 680M	68	0.28	0.72
MC2W0606 - 820M	82	0.39	0.66
MC2W0606 - 101K	100	0.43	0.59
MC2W0606 - 121K	120	0.54	0.54
MC2W0606 - 151K	150	0.64	0.48
MC2W0606 - 181K	180	0.74	0.44
MC2W0606 - 221K	220	0.96	0.40
MC2W0606 - 271K	270	1.12	0.36
MC2W0606 - 331K	330	1.48	0.33
MC2W0606 - 391K	390	1.66	0.30
MC2W0606 - 471K	470	1.91	0.28
MC2W0606 - 561K	560	2.31	0.25
MC2W0606 - 681K	680	2.67	0.23
MC2W0606 - 821K	820	3.10	0.21
MC2W0606 - 102K	1000	4.45	0.19

▶ Electrical Characteristics For MC2W0805 Series

Part Number	Inductance [μH]	DCR(max) [Ω]	IDC [A]
MC2W0805 - 100M	10	0.07	2.50
MC2W0805 - 120M	12	0.08	2.40
MC2W0805 - 150M	15	0.09	2.10
MC2W0805 - 180M	18	0.10	2.00
MC2W0805 - 220M	22	0.12	1.70
MC2W0805 - 270M	27	0.14	1.60
MC2W0805 - 330M	33	0.17	1.40
MC2W0805 - 390M	39	0.21	1.30
MC2W0805 - 470M	47	0.24	1.20
MC2W0805 - 560M	56	0.31	1.10
MC2W0805 - 680M	68	0.34	1.00
MC2W0805 - 820M	82	0.40	0.93
MC2W0805 - 101K	100	0.52	0.81
MC2W0805 - 121K	120	0.59	0.76
MC2W0805 - 151K	150	0.71	0.67
MC2W0805 - 181K	180	0.89	0.62
MC2W0805 - 221K	220	1.04	0.54
MC2W0805 - 271K	270	1.28	0.49
MC2W0805 - 331K	330	1.47	0.44
MC2W0805 - 391K	390	1.67	0.41
MC2W0805 - 471K	470	1.95	0.38
MC2W0805 - 561K	560	2.83	0.35
MC2W0805 - 681K	680	3.25	0.32
MC2W0805 - 821K	820	3.82	0.31
MC2W0805 - 102K	1000	5.28	0.25
MC2W0805 - 122K	1200	6.03	0.23
MC2W0805 - 152K	1500	7.15	0.21
MC2W0805 - 182K	1800	8.26	0.20
MC2W0805 - 222K	2200	11.10	0.18
MC2W0805 - 272K	2700	13.10	0.16
MC2W0805 - 332K	3300	15.90	0.14
MC2W0805 - 392K	3900	18.00	0.13
MC2W0805 - 472K	4700	23.90	0.12
MC2W0805 - 562K	5600	26.80	0.11
MC2W0805 - 682K	6800	31.70	0.098
MC2W0805 - 822K	8200	46.50	0.088
MC2W0805 - 103K	10000	55.70	0.081

▶ Electrical Characteristics For MC2W0807 Series

Part Number	Inductance [μH]	DCR(max) [Ω]	IDC [A]
MC2W0807 - 100M	10	0.05	2.90
MC2W0807 - 120M	12	0.06	2.50
MC2W0807 - 150M	15	0.07	2.20
MC2W0807 - 180M	18	0.08	1.90
MC2W0807 - 220M	22	0.09	1.80
MC2W0807 - 270M	27	0.11	1.70
MC2W0807 - 330M	33	0.13	1.50
MC2W0807 - 390M	39	0.14	1.30
MC2W0807 - 470M	47	0.15	1.30
MC2W0807 - 560M	56	0.18	1.20
MC2W0807 - 680M	68	0.20	1.10
MC2W0807 - 820M	82	0.24	1.00
MC2W0807 - 101K	100	0.28	0.89
MC2W0807 - 121K	120	0.36	0.81
MC2W0807 - 151K	150	0.42	0.72
MC2W0807 - 181K	180	0.57	0.66
MC2W0807 - 221K	220	0.63	0.57
MC2W0807 - 271K	270	0.88	0.51
MC2W0807 - 331K	330	1.05	0.46
MC2W0807 - 391K	390	1.17	0.44
MC2W0807 - 471K	470	1.34	0.41
MC2W0807 - 561K	560	1.72	0.36
MC2W0807 - 681K	680	1.96	0.33
MC2W0807 - 821K	820	2.56	0.30
MC2W0807 - 102K	1000	2.94	0.27
MC2W0807 - 122K	1200	4.04	0.24
MC2W0807 - 152K	1500	4.70	0.22
MC2W0807 - 182K	1800	5.05	0.20
MC2W0807 - 222K	2200	6.25	0.18
MC2W0807 - 272K	2700	8.72	0.16
MC2W0807 - 332K	3300	10.60	0.15
MC2W0807 - 392K	3900	14.20	0.14
MC2W0807 - 472K	4700	16.70	0.12
MC2W0807 - 562K	5600	18.70	0.11
MC2W0807 - 682K	6800	21.80	0.10
MC2W0807 - 822K	8200	28.70	0.093
MC2W0807 - 103K	10000	33.00	0.084

▶ Electrical Characteristics For MC2W0809 Series

Part Number	Inductance [μH]	DCR(max) [Ω]	IDC [A]
MC2W0809 - 100M	10	0.04	2.60
MC2W0809 - 120M	12	0.04	2.60
MC2W0809 - 150M	15	0.05	2.10
MC2W0809 - 180M	18	0.05	2.00
MC2W0809 - 220M	22	0.06	1.70
MC2W0809 - 270M	27	0.06	1.60
MC2W0809 - 330M	33	0.07	1.40
MC2W0809 - 390M	39	0.08	1.40
MC2W0809 - 470M	47	0.10	1.30
MC2W0809 - 560M	56	0.11	1.20
MC2W0809 - 680M	68	0.14	1.10
MC2W0809 - 820M	82	0.16	1.00
MC2W0809 - 101K	100	0.19	0.90
MC2W0809 - 121K	120	0.22	0.82
MC2W0809 - 151K	150	0.27	0.74
MC2W0809 - 181K	180	0.31	0.71
MC2W0809 - 221K	220	0.38	0.64
MC2W0809 - 271K	270	0.53	0.57
MC2W0809 - 331K	330	0.61	0.51
MC2W0809 - 391K	390	0.69	0.48
MC2W0809 - 471K	470	0.89	0.43
MC2W0809 - 561K	560	1.01	0.40
MC2W0809 - 681K	680	1.18	0.35
MC2W0809 - 821K	820	1.57	0.32
MC2W0809 - 102K	1000	1.84	0.30
MC2W0809 - 122K	1200	2.10	0.27
MC2W0809 - 152K	1500	2.80	0.23
MC2W0809 - 182K	1800	3.21	0.21
MC2W0809 - 222K	2200	4.21	0.19
MC2W0809 - 272K	2700	4.94	0.17
MC2W0809 - 332K	3300	6.16	0.15
MC2W0809 - 392K	3900	6.84	0.14
MC2W0809 - 472K	4700	7.89	0.13
MC2W0809 - 562K	5600	11.5	0.12
MC2W0809 - 682K	6800	13.2	0.11
MC2W0809 - 822K	8200	15.2	0.10
MC2W0809 - 103K	10000	22.0	0.089
MC2W0809 - 123K	12000	25.0	0.073
MC2W0809 - 153K	15000	29.1	0.068
MC2W0809 - 183K	18000	38.9	0.066
MC2W0809 - 223K	22000	44.9	0.059
MC2W0809 - 273K	27000	55.7	0.052
MC2W0809 - 333K	33000	64.2	0.048
MC2W0809 - 393K	39000	74.2	0.042
MC2W0809 - 473K	47000	96.4	0.038

▶ Electrical Characteristics For MC2W1014 Series

Part Number	Inductance [μH]	DCR(max) [Ω]	IDC [A]
MC2W 1014 - 6R3M	6.3	0.260	4.30
MC2W 1014 - 7R5M	7.5	0.290	4.20
MC2W 1014 - 100M	10	0.033	4.00
MC2W 1014 - 120M	12	0.035	3.90
MC2W 1014 - 150M	15	0.039	3.70
MC2W 1014 - 180M	18	0.047	3.50
MC2W 1014 - 220M	22	0.051	3.30
MC2W 1014 - 270M	27	0.057	3.10
MC2W 1014 - 330M	33	0.064	2.90
MC2W 1014 - 390M	39	0.074	2.70
MC2W 1014 - 470M	47	0.083	2.50
MC2W 1014 - 560M	56	0.104	2.30
MC2W 1014 - 680M	68	0.117	2.10
MC2W 1014 - 820M	82	0.130	1.90
MC2W 1014 - 101K	100	0.143	1.70
MC2W 1014 - 121K	120	0.195	1.50
MC2W 1014 - 151K	150	0.221	1.40
MC2W 1014 - 181K	180	0.260	1.30
MC2W 1014 - 221K	220	0.350	1.20
MC2W 1014 - 271K	270	0.390	1.10
MC2W 1014 - 331K	330	0.520	1.00
MC2W 1014 - 391K	390	0.570	0.92
MC2W 1014 - 471K	470	0.650	0.84
MC2W 1014 - 561K	560	0.790	0.75
MC2W 1014 - 681K	680	0.960	0.69
MC2W 1014 - 821K	820	1.220	0.62
MC2W 1014 - 102K	1000	1.60	0.52
MC2W 1014 - 122K	1200	2.20	0.46
MC2W 1014 - 152K	1500	2.50	0.41
MC2W 1014 - 182K	1800	2.90	0.36
MC2W 1014 - 222K	2200	3.20	0.32
MC2W 1014 - 272K	2700	3.70	0.29
MC2W 1014 - 332K	3300	5.00	0.27
MC2W 1014 - 392K	3900	5.60	0.25
MC2W 1014 - 472K	4700	7.40	0.23
MC2W 1014 - 562K	5600	8.20	0.21
MC2W 1014 - 682K	6800	11.9	0.19
MC2W 1014 - 822K	8200	14.0	0.17
MC2W 1014 - 103K	10000	16.0	0.16
MC2W 1014 - 123K	12000	21.0	0.15
MC2W 1014 - 153K	15000	24.0	0.14
MC2W 1014 - 183K	18000	27.0	0.13
MC2W 1014 - 223K	22000	34.0	0.12
MC2W 1014 - 273K	27000	39.0	0.11
MC2W 1014 - 333K	33000	51.0	0.10